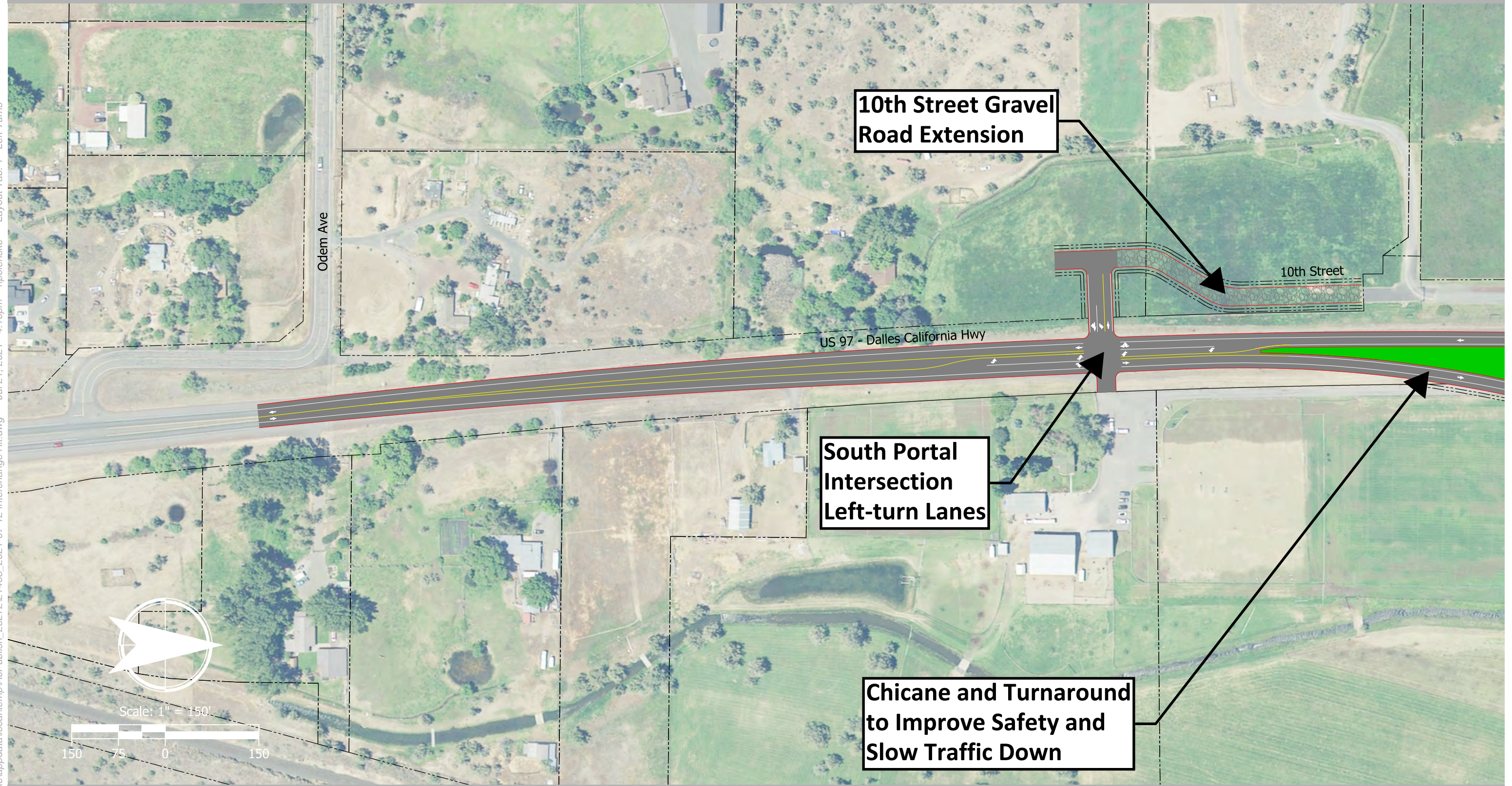


Left Turn Lane at Crescent Moon Ranch & Extension of 10th St

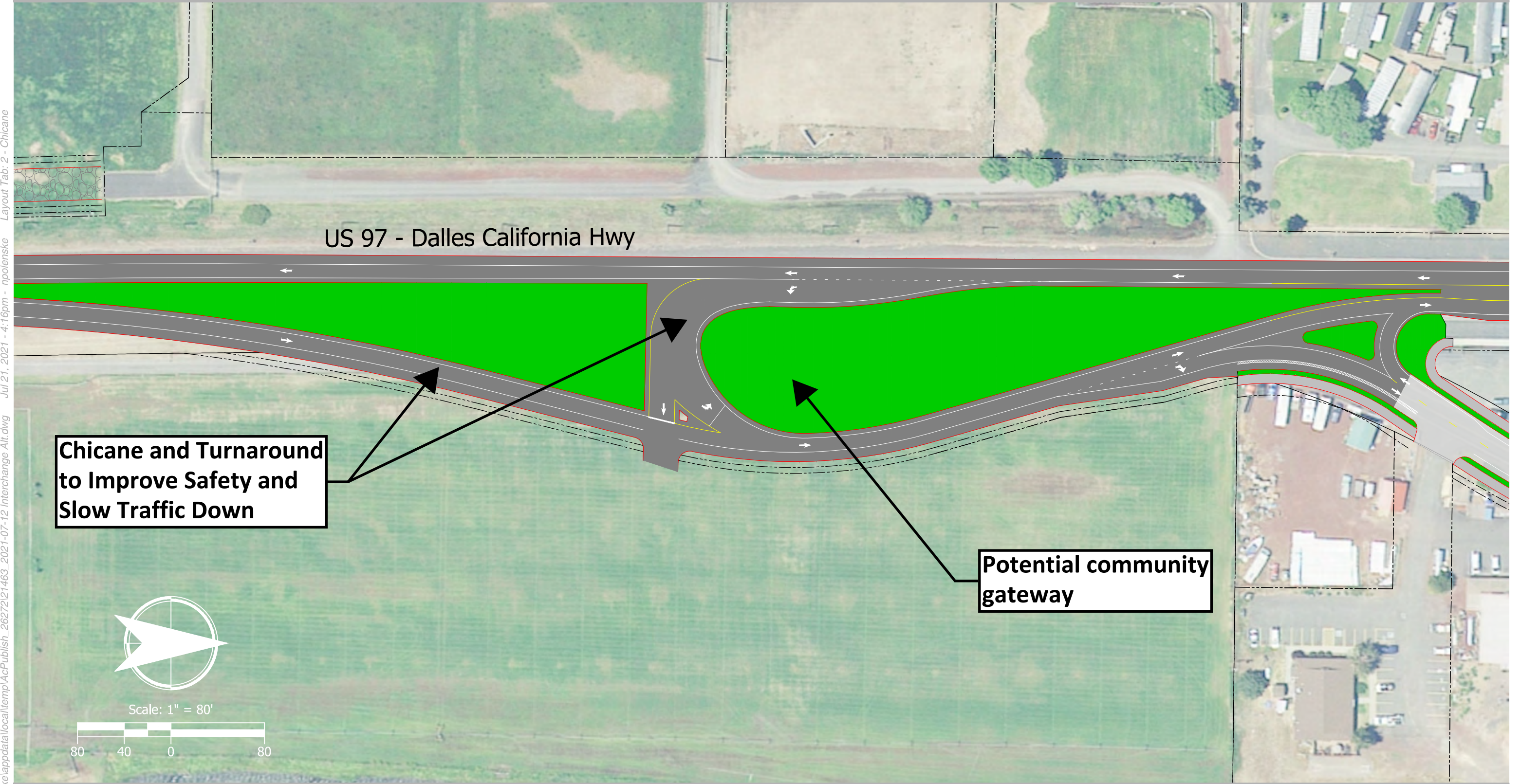
Preliminary Design Subject to Change

Date: August 4, 2021



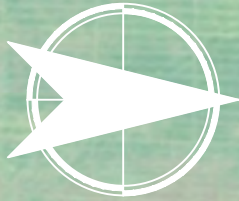
C:\Users\npolenske\appdata\local\temp\AcPublish_262721463_2021-07-12 Interchange Alt.dwg Jul 21, 2021 - 4:16pm - npolenske Layout Tab: 1 - Left Turns

C:\Users\npolenske\appdata\local\temp\AcPublish_26272\21463_2021-07-12 Interchange Alt.dwg Jul 21, 2021 - 4:16pm - npolenske Layout Tab: 2 - Chicane



**Chicane and Turnaround
to Improve Safety and
Slow Traffic Down**

**Potential community
gateway**



Scale: 1" = 80'



US 97 - Dalles California Hwy

11th Street

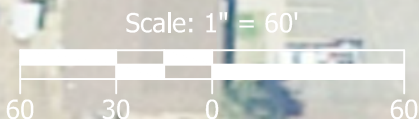
Smith Rock Way

All-way Stop Controlled Intersection at 11th/B Ave to Improve Safety

On-street parking

On-street parking

Improved 11th Street with Sidewalks and Bike Lanes Throughout the Community and Maintained Two-Way Traffic

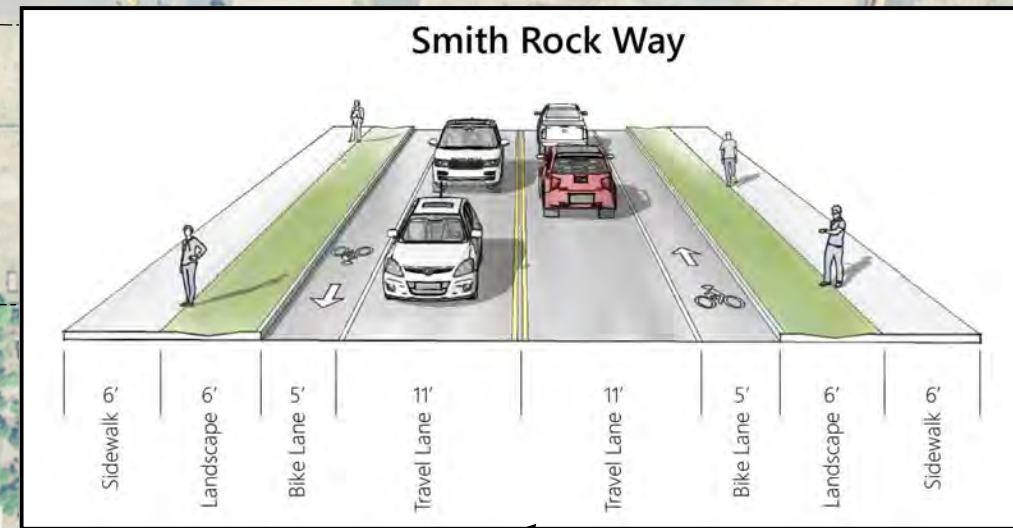
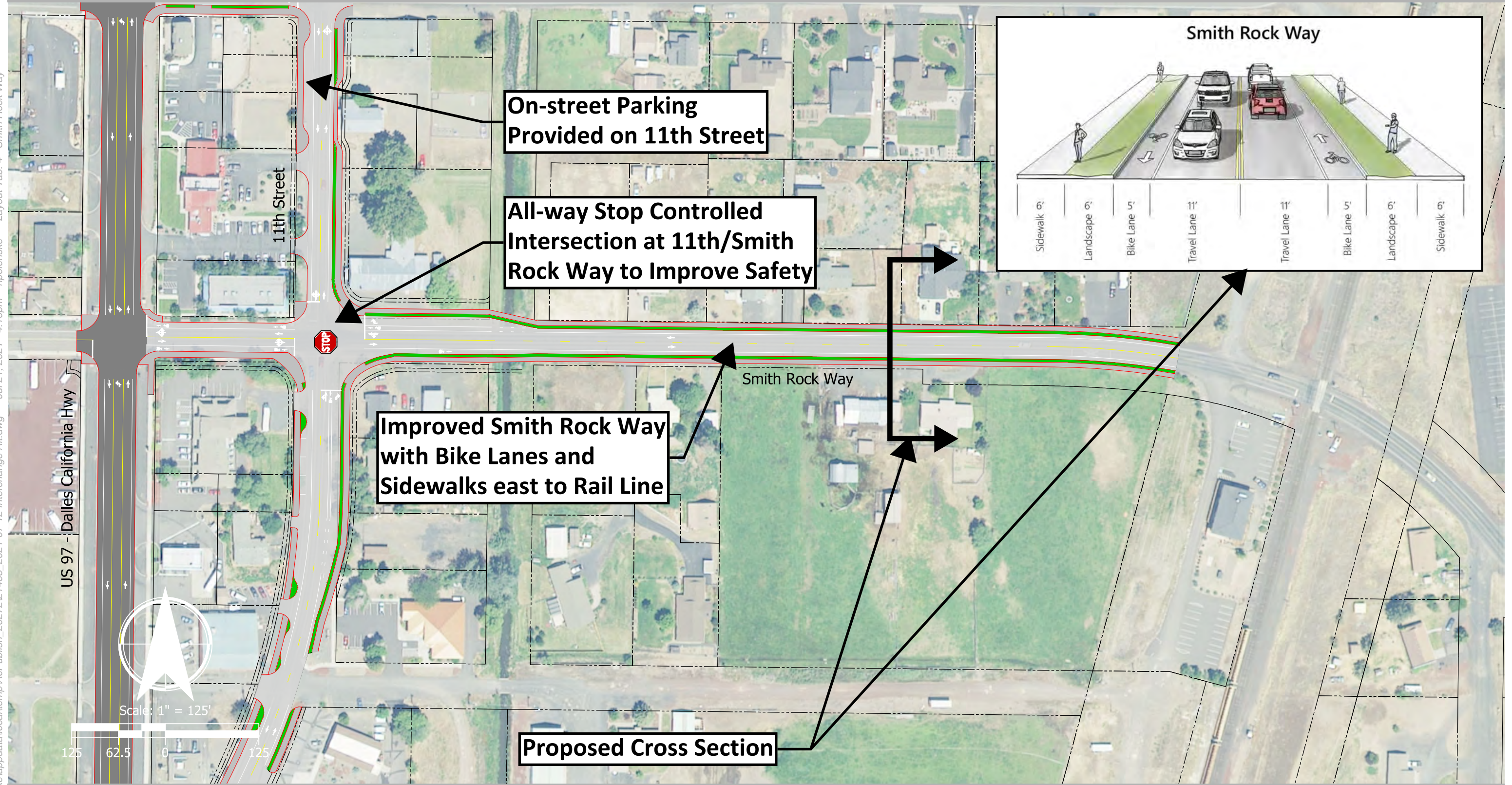


C:\Users\npolenske\appdata\local\temp\AcPublish_26272\21463_2021-07-12 Interchange Alt.dwg Jul 21, 2021 - 4:16pm - npolenske Layout Tab: 3 - 11th South

Smith Rock Way Eastern Improvements

Preliminary Design Subject to Change
Date: August 4, 2021

C:\Users\npolenske\appdata\local\temp\AcPublish_26272\21463_2021-07-12 Interchange Alt.dwg Jul 21, 2021 - 4:16pm - npolenske Layout Tab: 4 - Smith Rock Way



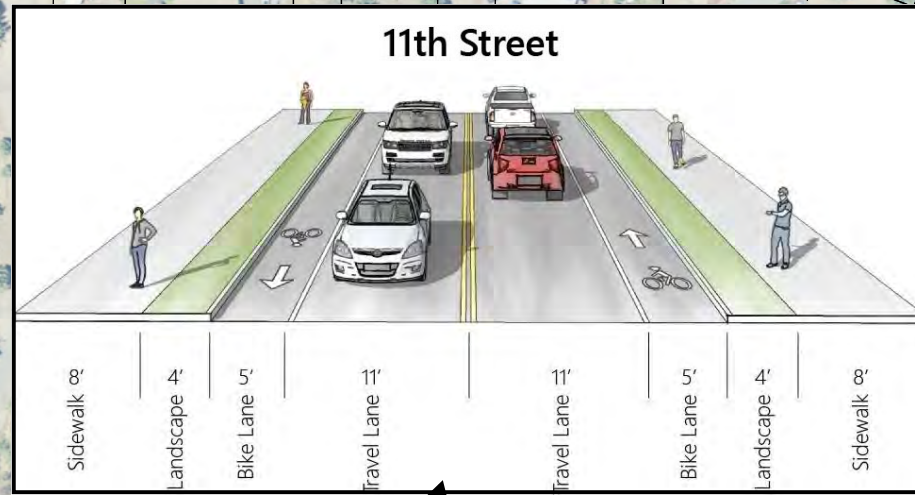
11th North of Smith Rock Way

Preliminary Design Subject to Change

Date: August 4, 2021

Side Street (B Ave, C Ave, Central Ave) and US97 ADA Intersection Improvements

Maintain existing US97 lane configuration

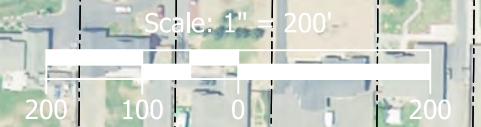


Proposed Cross Section

Improved 11th Street with Sidewalks and Bike Lanes Throughout the Community and Maintained Two-Way Traffic

H Street Extension to Facilitate Future Improvements

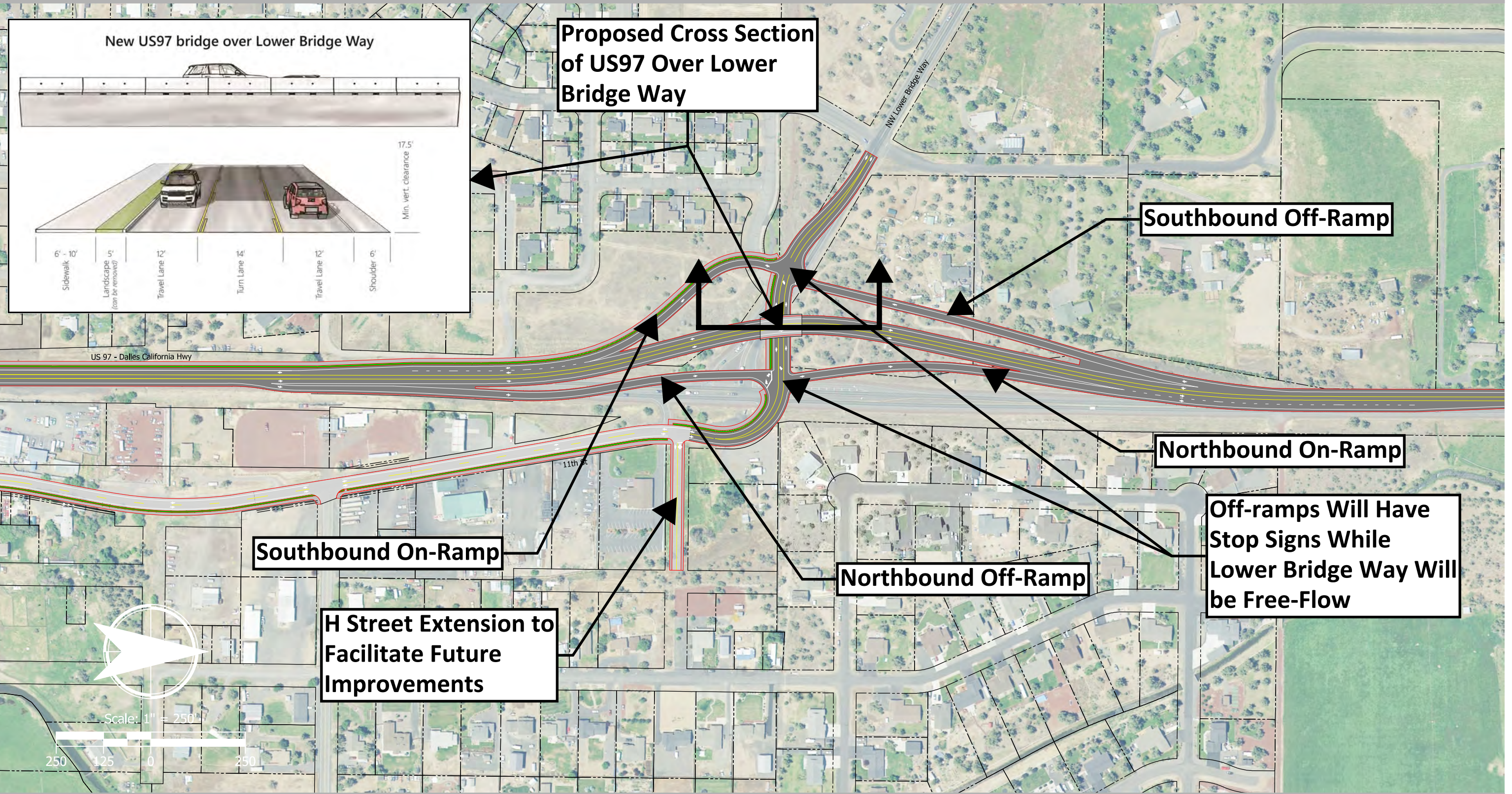
All-way Stop Controlled Intersection at 11th/Smith Rock Way & 11th/Central Ave to Improve Safety



C:\Users\npolenske\appdata\local\temp\AcPublish_262721463_2021-07-12 Interchange Alt.dwg Jul 21, 2021 - 4:16pm - npolenske Layout Tab: 5 - 11th North

US97/Lower Bridge Way Interchange

Preliminary Design Subject to Change
Date: August 4, 2021

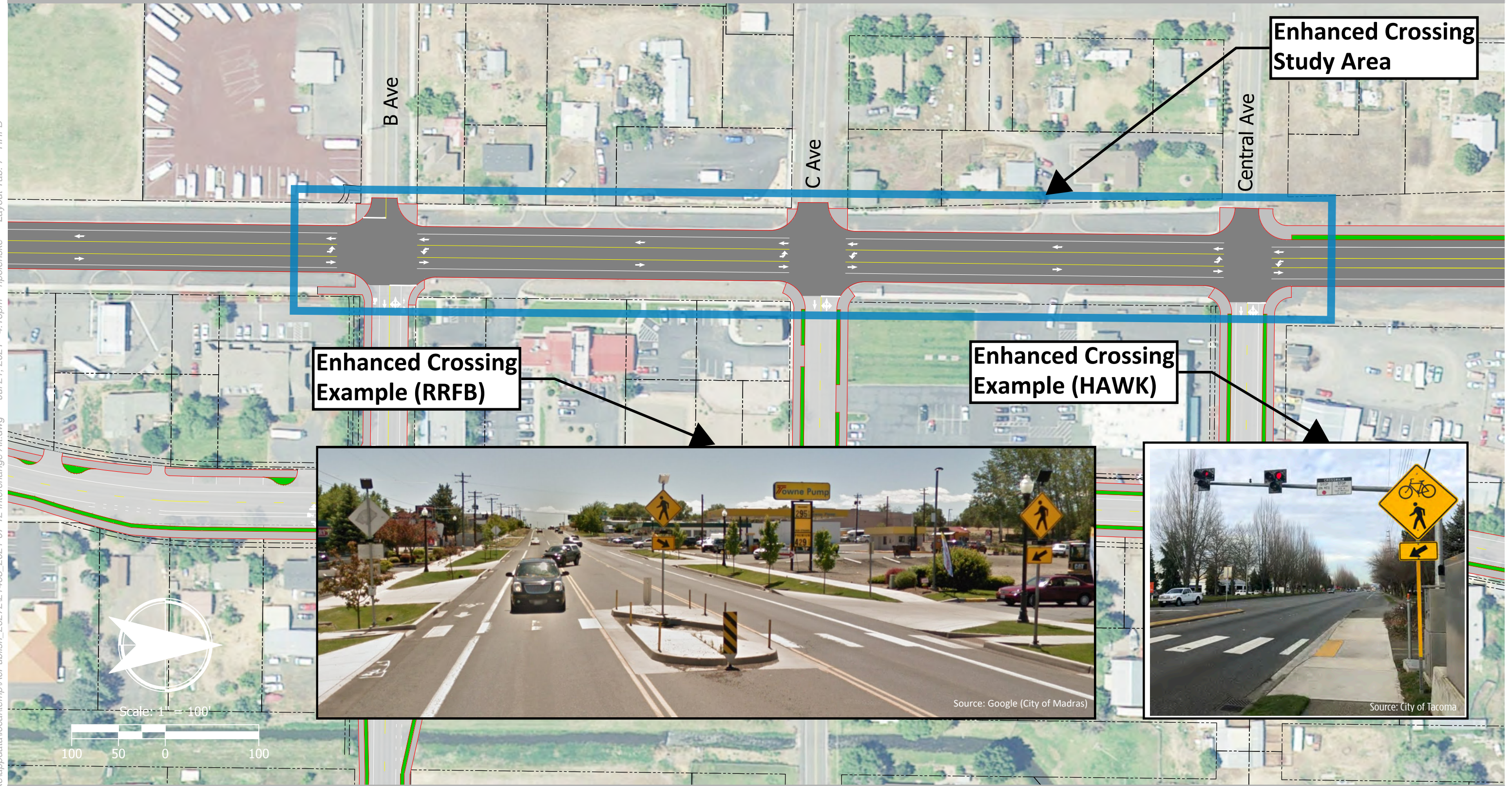


C:\Users\npolenske\appdata\local\temp\AcPublish_26272\21463_2021-07-12 Interchange Alt.dwg Jul 21, 2021 - 4:16pm - npolenske Layout Tab: 6 - Interchange

Potential Enhanced Pedestrian Crossings

Preliminary Design Subject to Change
Date: August 4, 2021

C:\Users\npolenske\appdata\local\temp\AcPublish_262721463_2021-07-12 Interchange Alt.dwg Jul 21, 2021 - 4:16pm - npolenske Layout Tab: 7 - RRFB



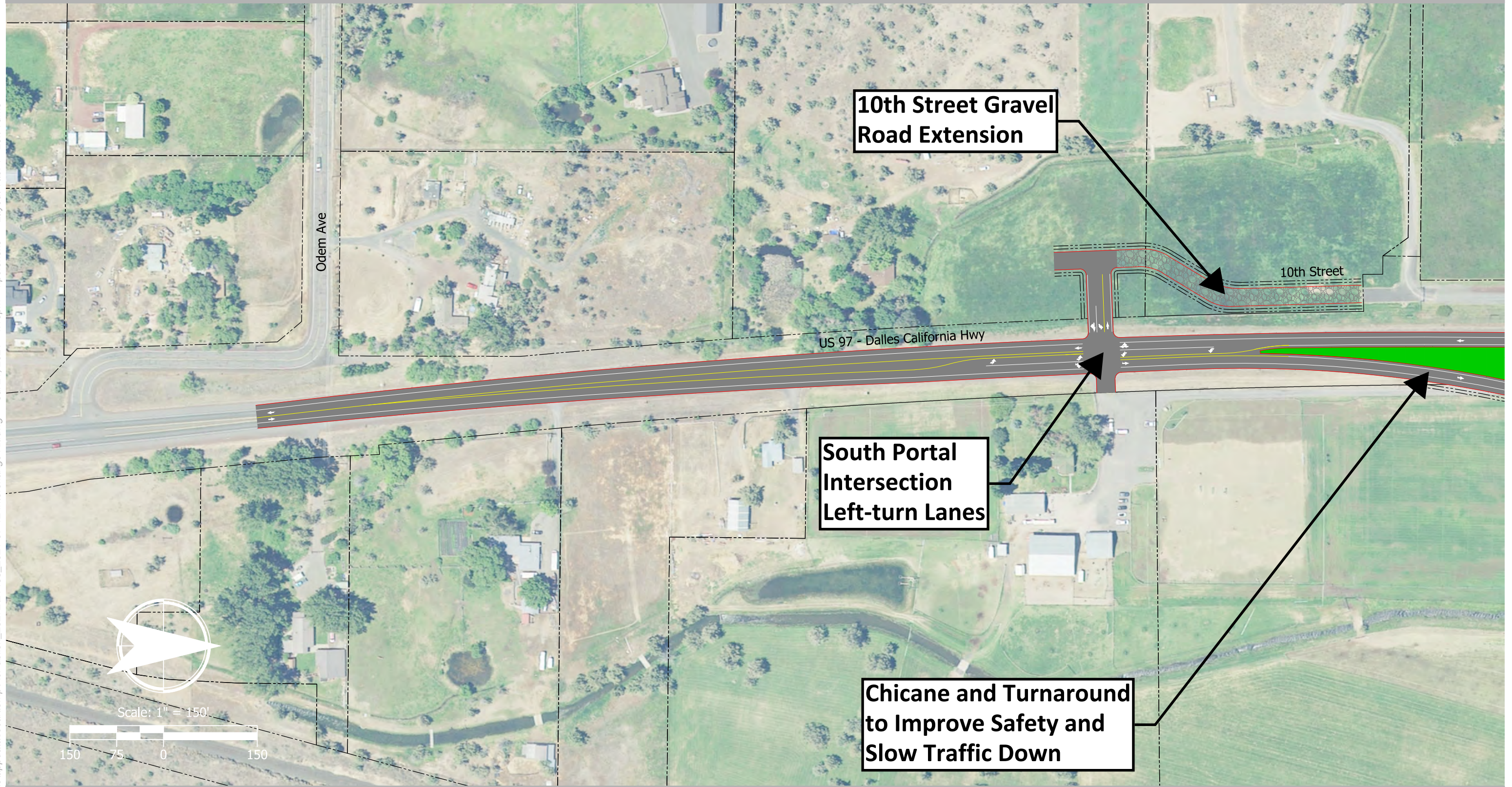
K21162 US97: Lower Bridge Way - NW 10th St (Terrebonne)



Left Turn Lane at Crescent Moon Ranch & Extension of 10th St

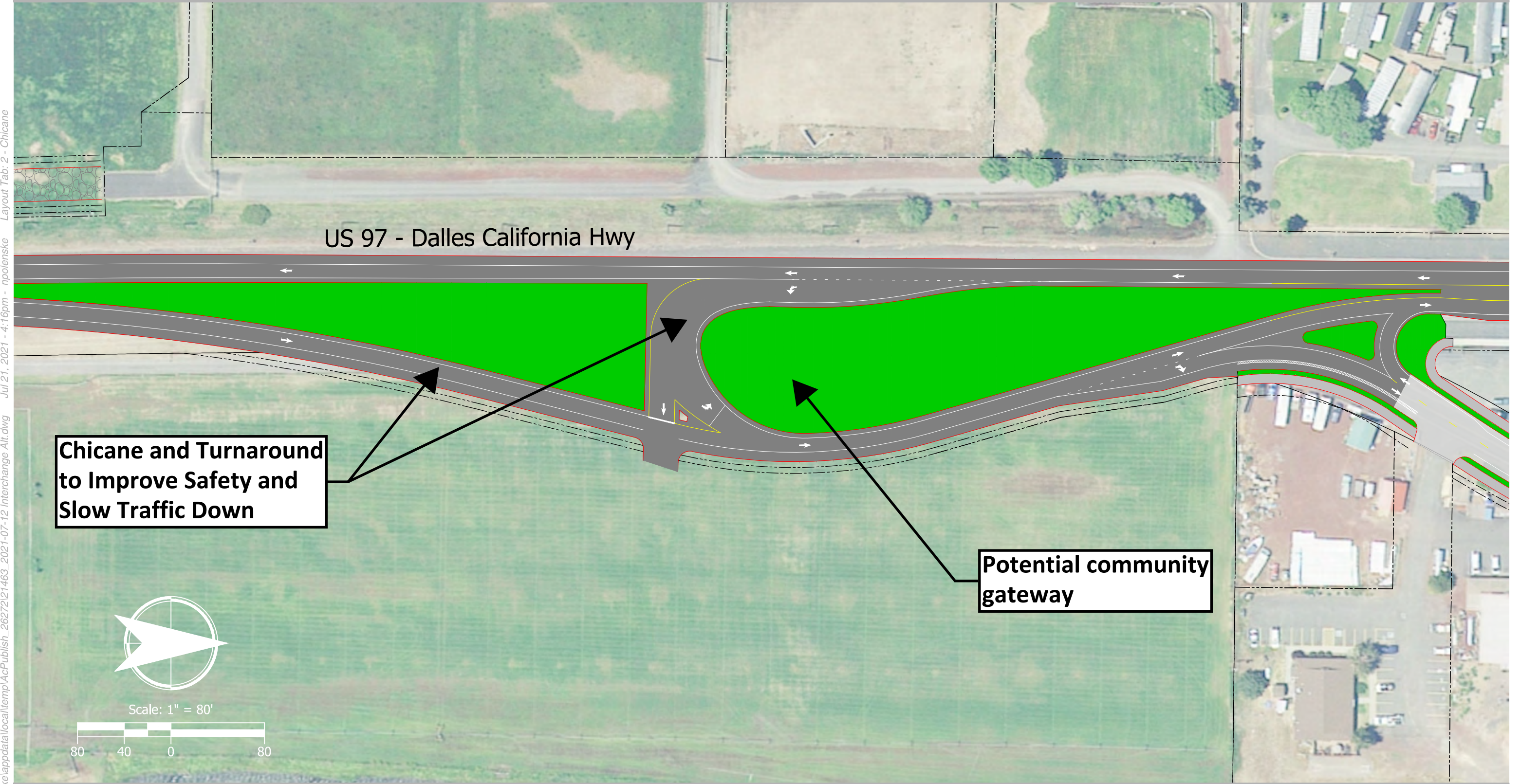
Preliminary Design Subject to Change

Date: August 4, 2021



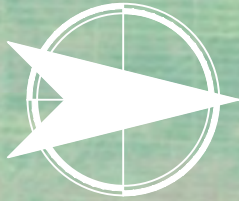
C:\Users\npolenske\appdata\local\temp\AcPublish_262721463_2021-07-12 Interchange Alt.dwg Jul 21, 2021 - 4:16pm - npolenske Layout Tab: 1 - Left Turns

C:\Users\npolenske\appdata\local\temp\AcPublish_26272\21463_2021-07-12 Interchange Alt.dwg Jul 21, 2021 - 4:16pm - npolenske Layout Tab: 2 - Chicane



**Chicane and Turnaround
to Improve Safety and
Slow Traffic Down**

**Potential community
gateway**



Scale: 1" = 80'



US 97 - Dalles California Hwy

11th Street

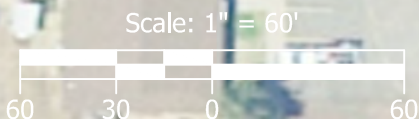
Smith Rock Way

All-way Stop Controlled Intersection at 11th/B Ave to Improve Safety

On-street parking

On-street parking

Improved 11th Street with Sidewalks and Bike Lanes Throughout the Community and Maintained Two-Way Traffic

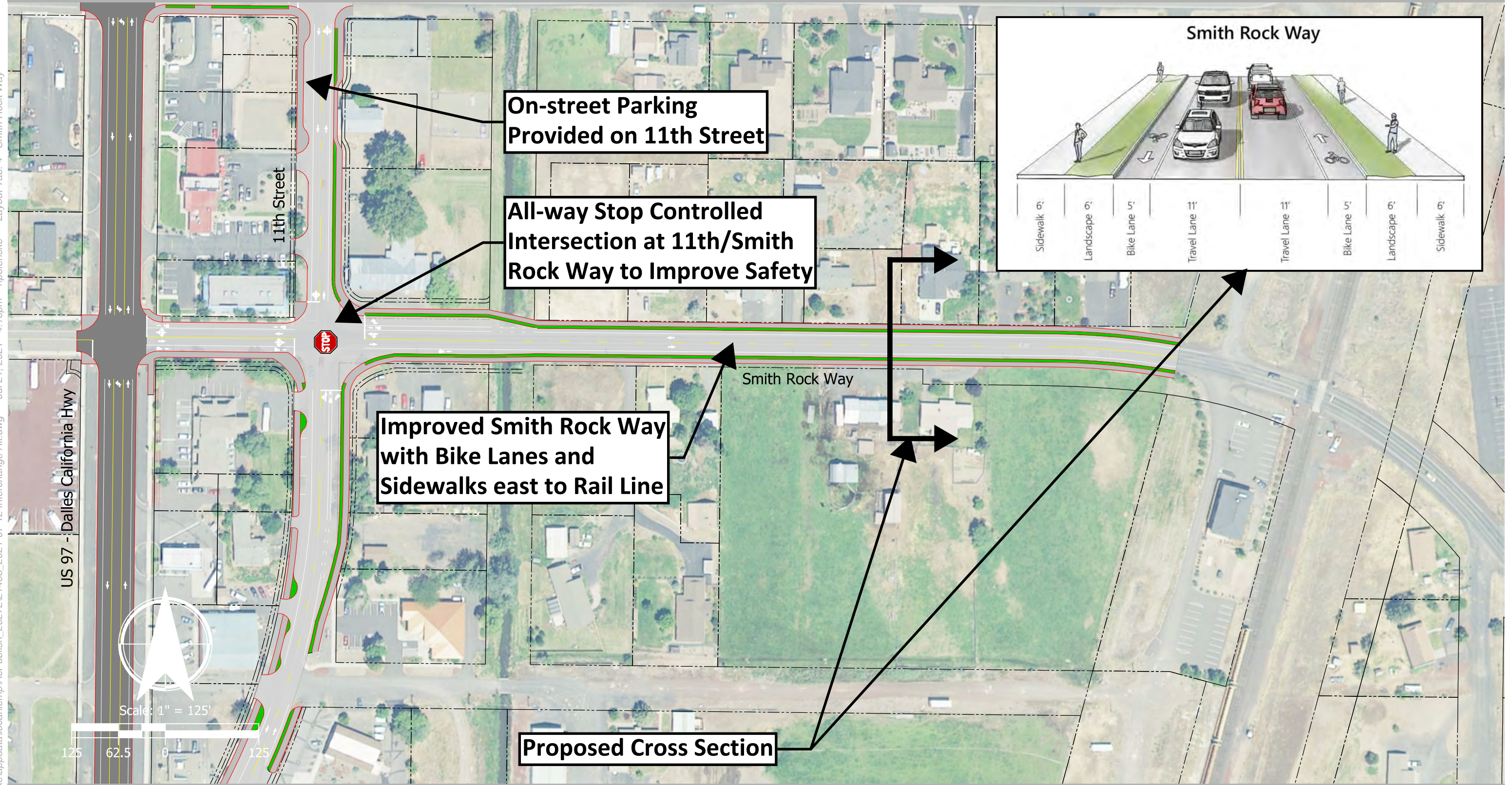


C:\Users\npolenske\appdata\local\temp\AcPublish_26272\21463_2021-07-12 Interchange Alt.dwg Jul 21, 2021 - 4:16pm - npolenske Layout Tab: 3 - 11th South

Smith Rock Way Eastern Improvements

Preliminary Design Subject to Change
Date: August 4, 2021

C:\Users\npolenske\appdata\local\temp\AcPublish_26272\21463_2021-07-12 Interchange Alt.dwg Jul 21, 2021 - 4:16pm - npolenske Layout Tab: 4 - Smith Rock Way



Scale: 1" = 125'



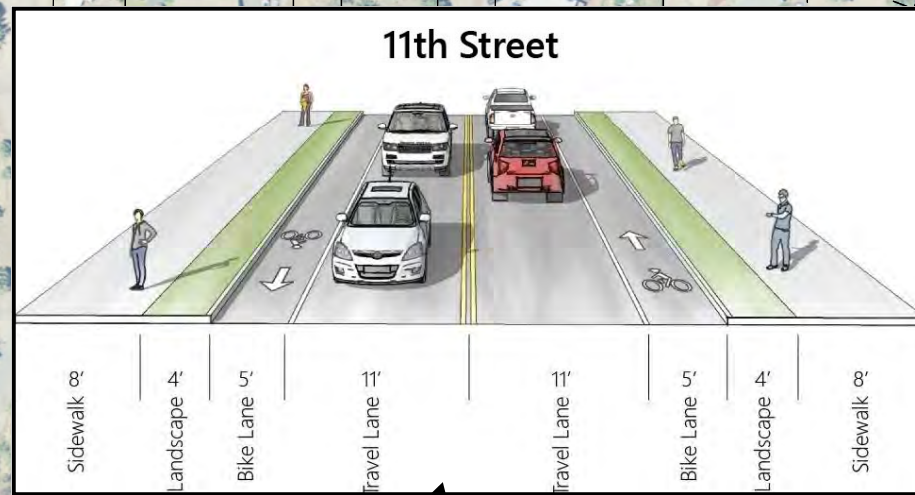
11th North of Smith Rock Way

Preliminary Design Subject to Change

Date: August 4, 2021

Side Street (B Ave, C Ave, Central Ave) and US97 ADA Intersection Improvements

Maintain existing US97 lane configuration

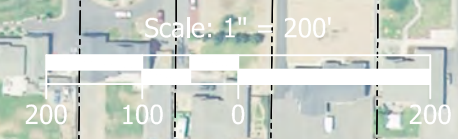


Proposed Cross Section

Improved 11th Street with Sidewalks and Bike Lanes Throughout the Community and Maintained Two-Way Traffic

H Street Extension to Facilitate Future Improvements

All-way Stop Controlled Intersection at 11th/Smith Rock Way & 11th/Central Ave to Improve Safety



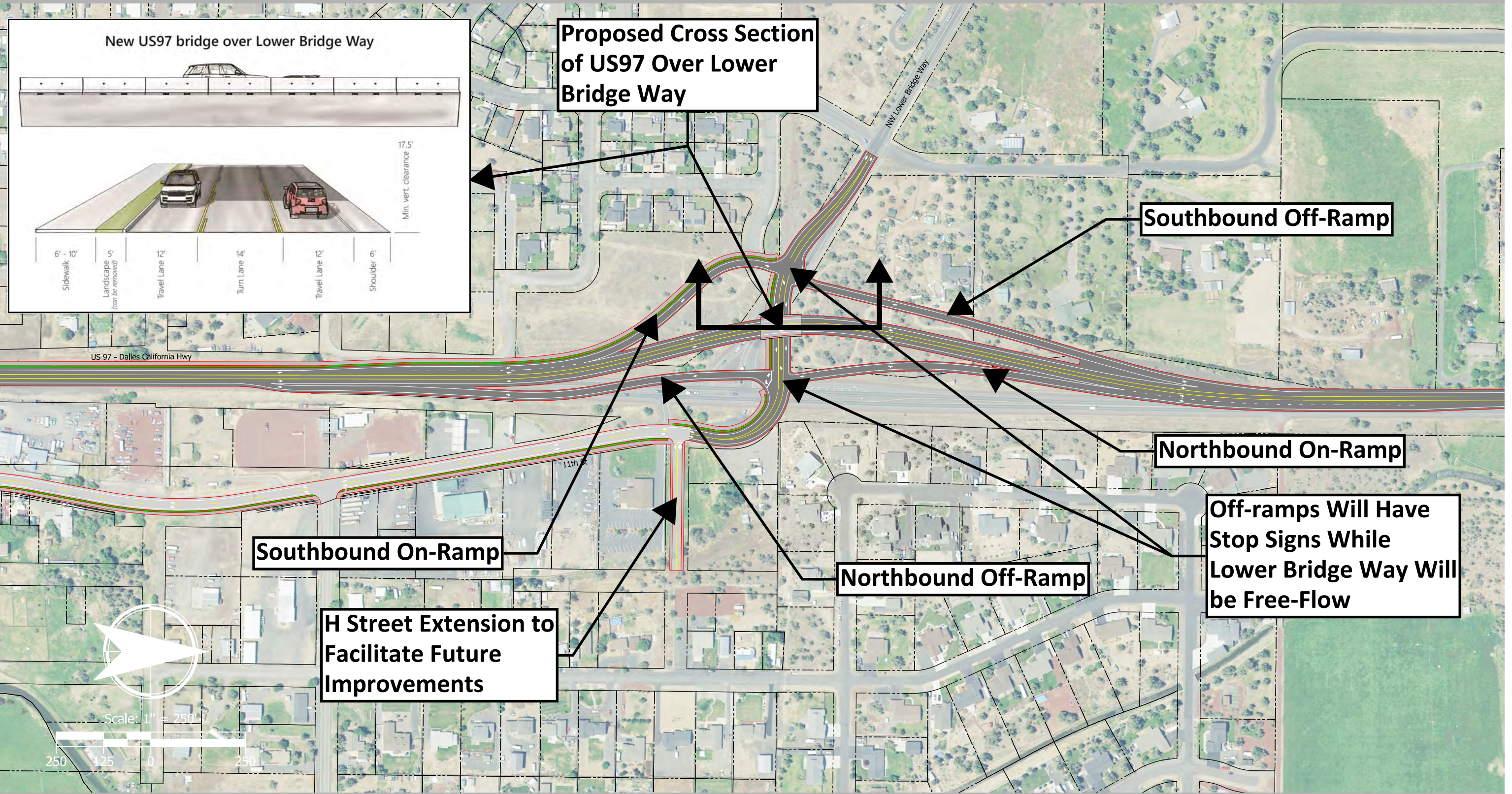
C:\Users\npolenske\appdata\local\temp\AcPublish_262721463_2021-07-12 Interchange Alt.dwg Jul 21, 2021 - 4:16pm - npolenske Layout Tab: 5 - 11th North



K21162 US97: Lower Bridge Way - NW 10th St (Terrebonne)

US97/Lower Bridge Way Interchange

Preliminary Design Subject to Change
Date: August 4, 2021

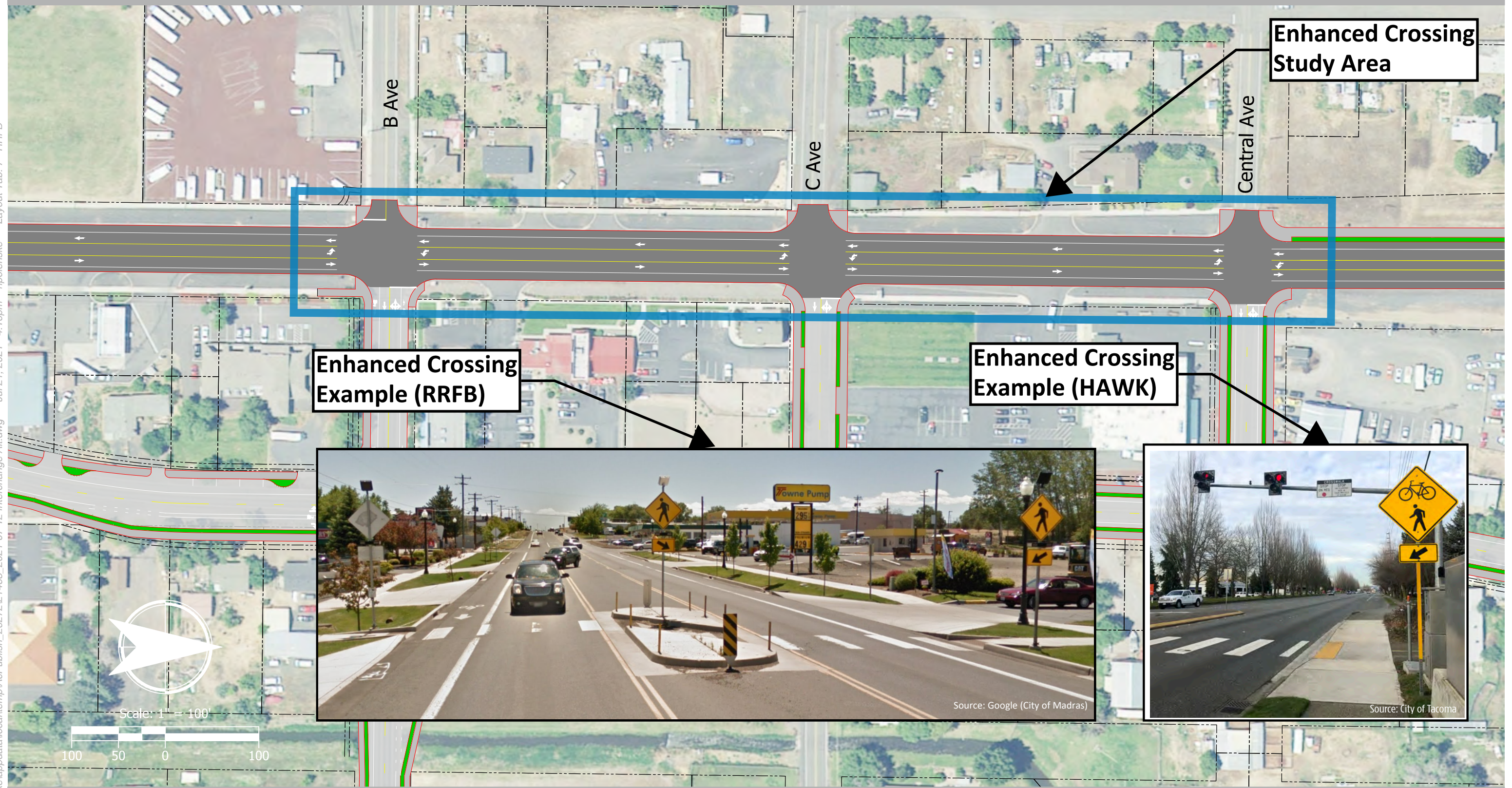


C:\Users\npolenske\appdata\local\temp\AcPublish_26272\21463_2021-07-12 Interchange Alt.dwg Jul 21, 2021 - 4:16pm - npolenske Layout Tab: 6 - Interchange

Potential Enhanced Pedestrian Crossings

Preliminary Design Subject to Change
Date: August 4, 2021

C:\Users\npolenske\appdata\local\temp\AcPublish_262721463_2021-07-12 Interchange Alt.dwg Jul 21, 2021 - 4:16pm - npolenske Layout Tab: 7 - RRFB



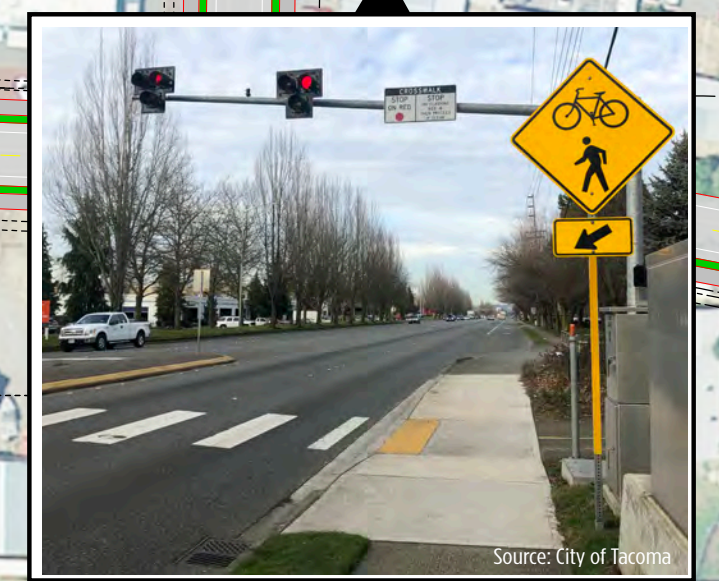
Enhanced Crossing Study Area

Enhanced Crossing Example (RRFB)

Enhanced Crossing Example (HAWK)



Source: Google (City of Madras)



Source: City of Tacoma



Scale: 1" = 100'

